

FACILITY USAGE RATES

as of November 2012

EVENT SPACE	USAGE RATE
The Overlooks of Railroad Park	
18th Street Overlook - Sunset View	\$ 1,000
14th Street Overlook - Double-Header View	\$ 600
Amphitheatre	\$ 2,000
The Rain Curtain - Overlook	\$ 900
17th Street Plaza	\$ 2,100
Section A, 17th Street Plaza and Ceremony Alley	\$ 1,200
Section B, 17th Street Plaza	\$ 1,500
The Gardens of Railroad Park	
Section A, The Gardens - Lake View	\$ 400
Section B, The Gardens - Wetlands View	\$ 200
On the Green	
Section 1, The Hillside	\$ 1,500
Section 2, The Meadow	\$ 2,000
Section 3, West Green.....	\$ 1,000
Lawn Terraces	\$ 1,500
West Gate	\$ 500
PACKAGES	
A Piece of Green	\$ 200
Your choice of lawn space. Includes one pop-up tent, one serving table and one garbage can. Four hour reservation.	
The Caboose	\$ 200
1/4 section of 17th Street Section A, one serving table, five pavilion tables with chairs. Four hour reservation.	
The Railway	\$ 400
1/4 section of 17th Street Section B, two serving tables, ten pavilion tables with chairs. Four hour reservation.	
The Conductor	\$ 600
1/2 section of the pavilion, four serving tables, 15 pavilion tables with chairs. One hour set-up / break down. Four hour reservation.	
The Lakefronts at Railroad Park	\$ 50
Includes one serving table and one garbage can. Four hour reservation.	

DISCOUNTS

Non-Profit: Non-profit organizations receive a 20% discount off of facility usage. A copy of the organization's 501c3 must accompany the Events Request Form. The non-profit discount does not apply to any of the Railroad Park packages.

The Winter Rail: November 1 through February 29 all facility usage fees and packages are 20% off.

RXR Discount: Rent two or more facility usage areas and receive a 10% discount off of your total facility usage fee.

Summer Tracks Discount: July 1 through August 31 all facility usage fees and packages are 20% off.

Book your space now! Call 205-521-9933

Email events@railroadpark.org **Online** www.railroadpark.org

YOUR EVENT
HERE.



***Railroad Park is Birmingham's most exciting
premier location for your next gathering–
anywhere from two people to several thousand!***



Your Map to Great



Event Space at RRP!

14th Street Overlook

Double-header view
Exclusive area with elevated vantage point overlooking Lawn Terraces and Birmingham's new Regions Field. Perfect for small gatherings of VIPs or friends.

West Gate

A unique mix of green space and pavement to host your event. View of Lawn Terraces and The West Green.

Lawn Terraces

An attractive modern design, perfect for concerts, lectures and speaking engagements. This space also includes the West Gate and 14th Street Overlook.

The Gardens, Section B

Great views of the Park, the Lake and the Rain Curtain. Close to amenities and extra parking.

The Rain Curtain

Unique prime location overlooking the Lake and Wetlands. Great views of the Park and Birmingham skyline.

Lakefront, Sections A,B,C,D

Four separate lakefront spots with beautiful views of Vulcan and the mountains. Perfect for an intimate picnic!

17th Street Plaza, Section B

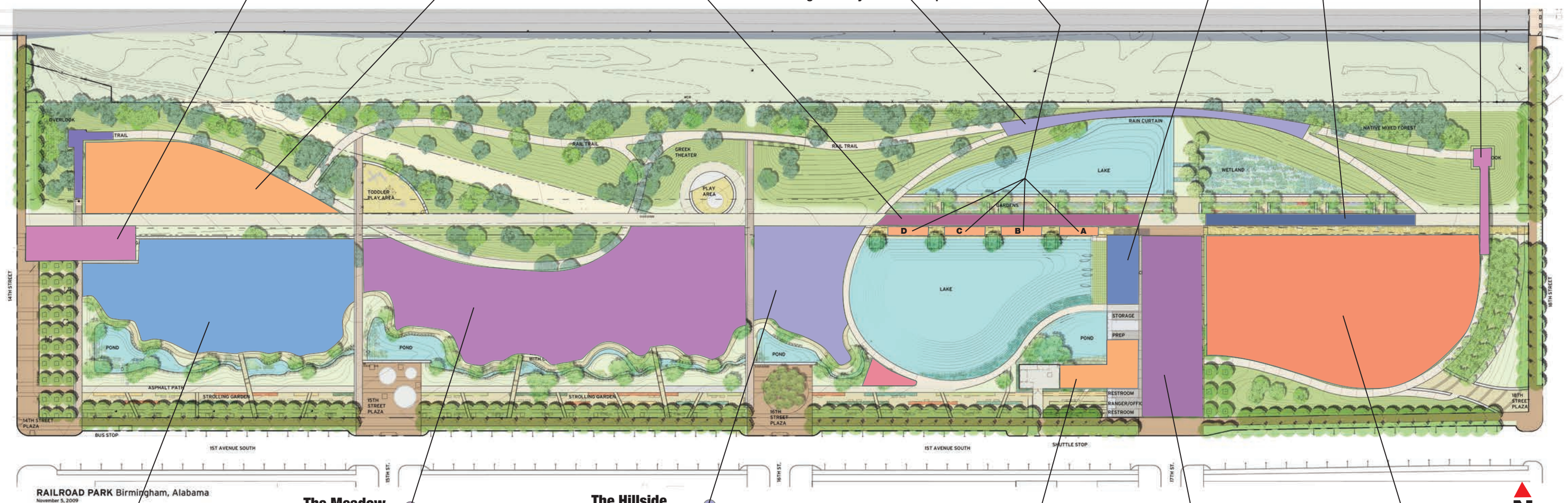
Conveniently located near amenities and parking. Covered area overlooks the Lake and affords great views of the Park.

The Gardens, Section A

Great views of the Park, the Wetlands and the Rain Curtain. Close to amenities and extra parking.

18th Street Overlook

Sunset view
Exclusive area with elevated vantage point affording breathtaking views of City and Park. Powell Street Bridge is included. Close to additional parking. Perfect for small gatherings.



The West Green

Very large rental area bordered by walking path and pond. Large carbon seat wall provides additional seating for guests.

The Meadow

Very spacious area—our largest green space available. Adjacent to both play areas. Located in the heart of the Park, The Meadow is bordered by a pond and Wetland Stream. Hillside provides additional beauty and privacy.

The Hillside

Spectacular elevated view of the entire Park, overlooking the Lake. The area is bordered by a pond and small walking trail. The Hillside also features a small bridge and four carbon wall seats. Great space!

17th Street Plaza, Section A

Conveniently located near amenities and parking. Includes covered area and the grassy Ceremony Alley.

17th Street Plaza

Large area convenient to amenities and parking. Covered sections are also available. Affords great views of The Rain Curtain, Gardens, Lake, Pond and Amphitheatre.

Amphitheatre

Large grassy area close to amenities and parking. Accommodates up to 4,000 people. Great sound quality makes the Amphitheatre perfect for movies and concerts.

Book your space now! Call 205-521-9933 Email events@railroadpark.org Go Online www.railroadpark.org